

Tunnelling Featured Projects

We have been involved in the following Major Tunnel Projects:

- Attiko Metro S.A. (Athens metro underground network, <http://www.attikometro.gr/>)
- Egnatia Odos SA (670 Km motorway, <http://www.egnatia.eu/page/>)
- Ergoose SA (a subsidiary of Hellenic Railway Organization executing related projects <http://www.ergose.gr/>)

Egnatia Odos is the Greek part of the European route E90. It is a motorway in Greece that extends from the western port of Igoumenitsa to the eastern Greek–Turkish border at Kipoi. It runs a total of 670 km (420 mi). The project began in the 1990s and was completed in 2009. We have participated as a geotechnical engineering consultant in a number of projects like the ones which are indicatively presented below:



Geotechnical site investigation, characterisation & Design in Section: 1 - 1.1.3 to 1.1.8. Neochori - Grika (Paramithia) Tunnels within the framework of the project: Consulting services for implementation of Geotechnical site investigation works in various positions along the Egnatia Odos Motorway (Geotechnical Site Investigation call ups).



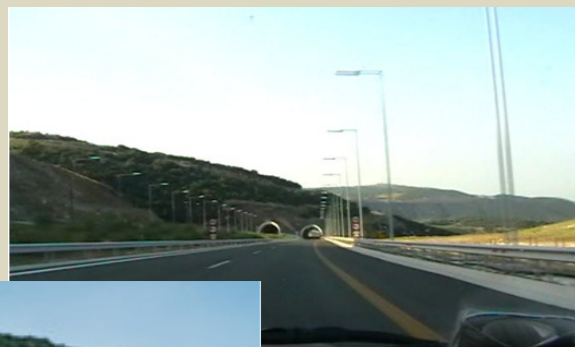
Geotechnical site investigation, characterisation & Design in Section: 14.1.1 - New Karvali - Chrisoupolis junction and Tunnels within the framework of the project: Consulting services for implementation of Geotechnical site investigation works in various positions along the Egnatia Odos Motorway (Geotechnical Site Investigation call ups).



Geotechnical site investigation, characterisation & Design in Sections: 4.1.5 / 6 - Panagia-Grevena Tunnels and junction Grevena. 4.2.4 - Grevena - Kozani (Industrial Area Kozani). 5.2. - Veria (Asomaton Detour). Work Order Numbers: 27a , 27b and 27c respectively, within the framework of the project: Consulting services for implementation of Geotechnical site investigation works in various positions along the Egnatia Odos Motorway (Geotechnical Site Investigation call ups).



Geotechnical site investigation, characterisation & Design in Section: 4.1.2s - Panagia – Grevena Tunnels. Work Order Number: 27a.a, within the framework of the project: Consulting services for implementation of Geotechnical site investigation works in various positions along the Egnatia Odos Motorway (Geotechnical Site Investigation call ups).



Geotechnical site investigation, characterisation & Design in Section: 2.4 - Arachthos River – Peristeri Twin Tunnels. Work Order Number: 30.a, within the framework of the project: Consulting services for implementation of Geotechnical site investigation works in various positions along the Egnatia Odos Motorway and its vertical axis (Geotechnical Site Investigation call ups).



Geotechnical site investigation, characterisation & Design in Sections: 4.1.3s - Panagia - Grevena, Bridge C2. Work Order Number: 30.b, within the framework of the project: Consulting services for implementation of Geotechnical site investigation works in various positions along the Egnatia Odos Motorway and its perpendicular axes (Geotechnical Investigation call ups).



Geotechnical site investigation, characterisation & Design in Sections: 4.1.2s - Panagia - Grevena, Bridge C3. Work Order Number: 30.c, within the framework of the project: Consulting services for implementation of Geotechnical site investigation works in various positions along the Egnatia Odos Motorway and its perpendicular axes (Geotechnical Investigation call ups).

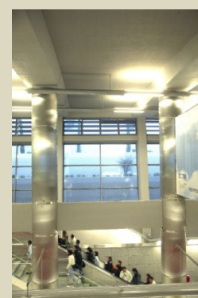


The Athens Metro

The Athens Metro is a rapid transit system in Greece, serving the Athens conurbation and parts of East Attica. It incorporates the former Athens-Piraeus Electric Railways (ISAP S.A.), which opened in 1869 and is now part of Line 1. Beginning in 1991, Attiko Metro S.A. constructed and extended Lines 2 and 3 and the Attiko Metro Operations Company (AMEL S.A.) operated these lines from 2000 until 2011. The metro network formally merged in 2011 when the Greek government created the Urban Rail Transport Company (STASY S.A.), a subsidiary of the Athens Urban Transport Organization (OASA S.A.). Our company has participated as a geotechnical engineering consultant in a number of projects like the ones which are indicatively presented below:

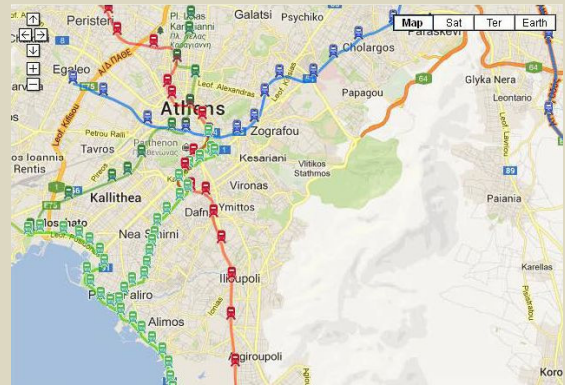


Geotechnical engineering and Soil Mechanics Study for the Analysis, Design and stability Calculations of Anchored piled Retaining Walls, 19,45 m deep, for the forty (40) excavation faces of Agios Antonios Metro Station at Peristeri City – Attica - Greece, in the framework of the project: "CON 00/001 - Extension of Line 2 Sepolia - Peristeri towards Peristeri - Agios Antonios Metro Station".

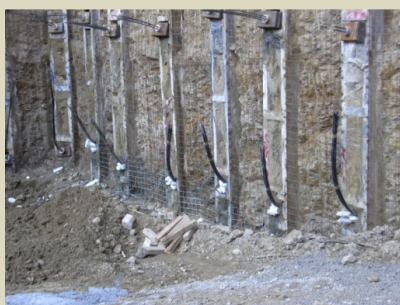


The Athens Railways Transporting Organization

Evaluation of existing Geotechnical site investigation & characterisation Factual Reports and compilation of Soil Mechanics Study for the safe & economic design of the foundation of temporary columns with micropiles required in the underground openings and retaining walls for the renovation of the existing Athens Railways Transport Organisation (ISAP) station in the Municipality of Neo Heraklion - Attica Prefecture / Greece.



Evaluation of existing Geotechnical site investigation & characterisation Factual Reports and compilation of Soil Mechanics Study for the safe & economic design of the foundation of temporary columns with micropiles required in the underground openings and retaining walls for the renovation of the existing Athens Railways Transport Organisation (ISAP) station in the Municipality of Neo Heraklion - Attica Prefecture / Greece.



For all the aforementioned projects a more detailed presentation could be made upon request